

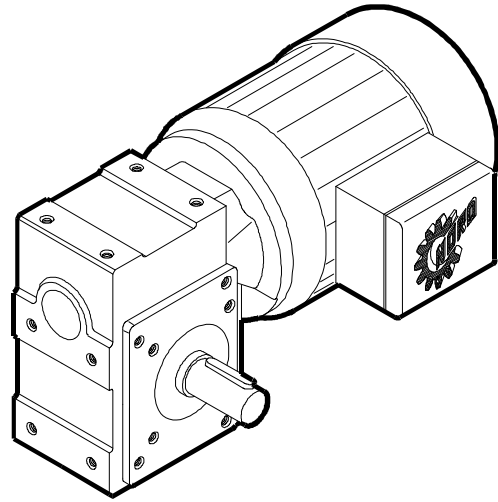
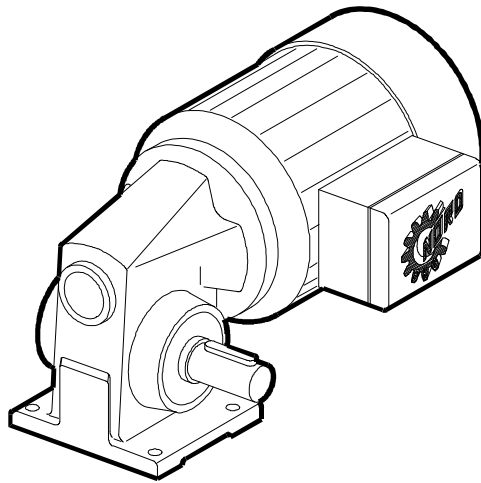
MINICASE[®] Worm Gearboxes Installation and Maintenance Instructions

BIM 1031

USA

CDN

Retain These Safety Instructions For Future Use



WARNING:

LOCK OUT POWER before any maintenance is performed. Make absolutely sure that no voltage is applied while work is being done on the gearbox.

It is presumed that system design, as well as all work with regard to transport, assembly, installation, starting-up, maintenance and repair, is performed by qualified personnel or supervised by skilled labor taking overall responsibility.

Preparing and performing installation

- lifting devices on the drive are designed to carry the drive weight
- foundation (base) should be of adequate size and vibration-proof
- install gear unit or geared motor rigid and braceless
- ensure sufficient ventilation for cooling
- make use of tapped hole for fastening to the shaft end
- when installing shaft connections, avoid shocks on shafts which can cause bearing damage
- preferably use flexible coupling between output shaft and driven machine
- fit output elements to shaft end or secure feather key before starting the motor
- it is the owner's responsibility to properly guard all moving parts of the machine

Efficiencies

A new wormgear reducer will have slightly lower efficiency than when the gear set is broken in. This effect increases with higher ratios. Efficiencies shown in the catalog are after a break in period of 25 hours at full load.

Maintenance

NORD Gear MINICASE[®] drives are maintenance free. The MINICASE[®] series of worm gear reducers are filled with polyglycol synthetic lubricant/bearing-grease. This ensures proper operation throughout the *full lifetime* of the units. No breather plugs are required because of synthetic lubricant used. The MINICASE[®] drives are completely sealed.

CAUTION:

Any change in normal operation (excessive noise, increased temperature or power consumption) may indicate a problem with the application.

Notify qualified maintenance personnel to inspect equipment; otherwise physical injury or damage to the machine may occur.

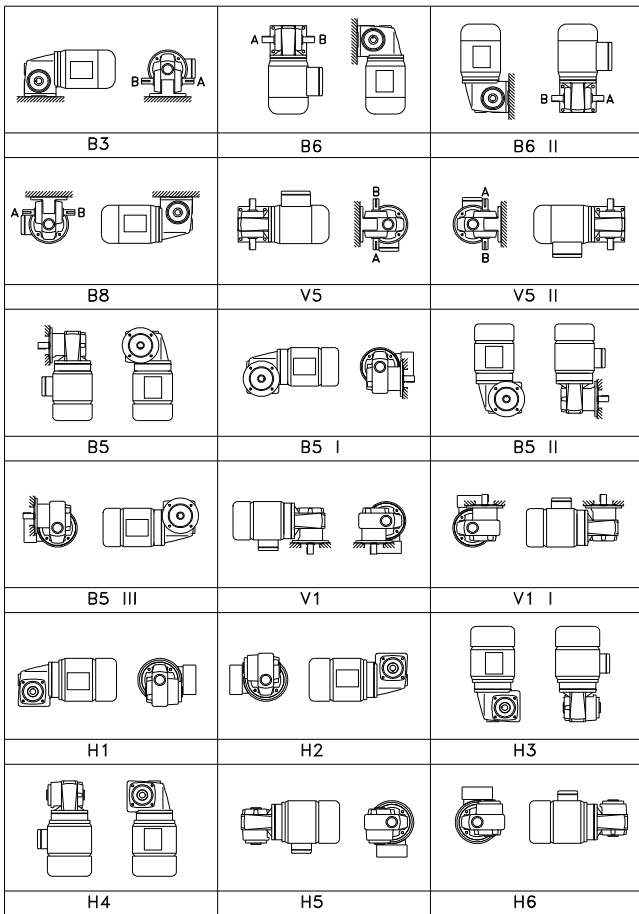
**IN CASE OF DOUBT,
DISCONNECT THE MACHINE IMMEDIATELY!**

WARNING:

Exposed moving parts can cause severe injury. It is the responsibility of the system designer to install adequate guards.

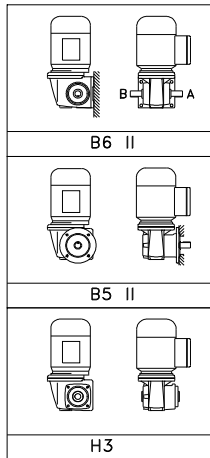
Mounting Positions

SINGLE STAGE MINICASE®



TWO STAGE MINICASE®

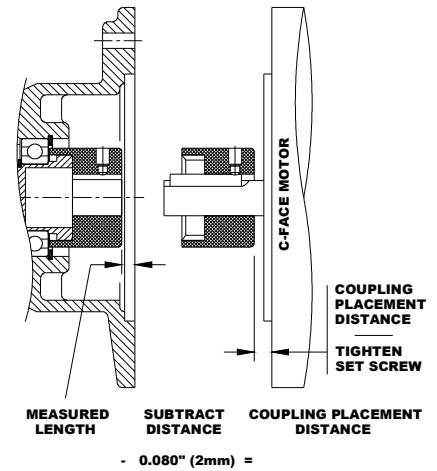
NORD DOUBLE REDUCTION HOUSINGS (2S STYLE) ARE FILLED AT THE FACTORY WITH OIL TO SUIT ALL MOUNTING POSITIONS EXCEPT FOR THE ONES SHOWN BELOW.



NEMA C-face Motor Installation Instructions

1. Put the coupling onto the splined input shaft until it is firmly seated.
2. Measure the distance from the face of the input adapter to the face of the coupling and record that measurement.
3. Subtract 0.08" (~2mm) from the distance. **This needs to be done so that the coupling will not be preloaded after installation!**
4. Use that measurement to locate the coupling from the face of the motor onto the shaft.

Once in place, tighten the setscrew to lock the coupling in place. It is also recommended that the shaft key be staked or bonded (Loctite) in place to prohibit the key from vibrating out.



NORD Gear Corporation

National Customer Service Toll Free 888-314-6673

www.nord.com

WEST
1121 Railroad Street
Building 101
Corona, CA 92882
Phone 951-279-2600
Fax 888-408-6673

MIDWEST
PO Box 367
800 Nord Drive
Waunakee, WI 53597
Phone 608-849-7300
Fax 800-373-6673

SOUTH
100 Forsyth Hall Dr.
Building 100B
Charlotte, NC 28273
Phone 704-529-1255
Fax 888-259-6673

NORD Gear Limited

Toll Free in Canada 800-668-4378

CANADA
41 West Drive
Brampton, Ontario L6T 4A1
Phone 905-796-3606
Fax 905-796-8130