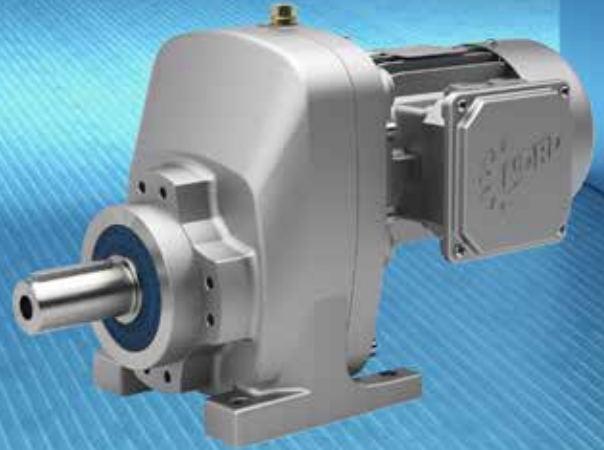


NORDBLOC.1[®]

SINGLE-STAGE GEAR UNITS

Highlights of single-stage NORDBLOC.1 helical gear units

- Low maintenance and exceptional service life made possible by FEM-optimized housing
- Strengthened output flange assembly due to a bolted connection design
- Optimized structural housing maximizes strength and rigidity of the gearbox while ensuring quiet operation
- Innovative staggered bearing design leads to higher load ratings and longer service life
- Simple, cost effective application integration made possible when combined with NORD's extensive offering of motors and drive technology
- Versatile mounting designs - footed/B14 flange, B5 flange, B14 face flange or footed/B5 flange



Performance data

Configuration: Inline

Motors, HP: (min/max) 0.16 - 10.0

Motors, kW: (min/max) 0.12 - 7.5

Gear efficiency: up to 97%

Number of gear stages: 1

Gear ratio, speed

Lowest standard gear ratio: 1.07:1

Highest standard gear ratio: 14.00:1

Output speed (60 Hz): 117-1,635 RPM

Output speed (50 Hz): 97-1,355 RPM

Mounting types

Housing with foot mounting: Standard

Versatile mounting options: B5 flange, B14 face flange, footed/B14 flange and footed/B5 flange

Outer diameter of B5 flange: [in] 4.72 - 9.84

Outer diameter of B5 flange: [mm] 120 - 250

Bolt circle diameter of B14 flange: [in] 2.68 - 4.33

Bolt circle diameter of B14 flange: [mm] 68 - 110

Options

Flexible Motor mounting options – Integral, NEMA or IEC adapters and custom solutions

Optional heavy duty output shaft bearings

Output flange & shaft combinations offered to match NEMA input dimensions



Footed housing with B14 flange and integral motor.



Housing with B14 flange mount and integral motor.



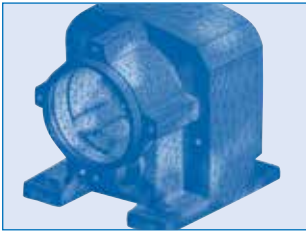
Housing with B5 flange mounting and integral motor.

Type	Ratio range	Input power range		Max. torque*		Solid shaft	
		[HP]	[kW]	[lb-in]	[Nm]	[in]	[mm]
SK 071.1	1.00 - 11.20	0.16 - 2.00	0.12 - 1.50	248.00	28.00	0.500 x 1.125	15 x 30
SK 171.1	1.00 - 14.00	0.16 - 3.00	0.12 - 2.20	496.00	56.00	0.750 x 1.570	20 x 40
SK 371.1	1.00 - 11.20	0.16 - 5.00	0.12 - 4.00	752.00	85.00	1.000 x 1.970	25 x 50
SK 571.1	1.25 - 10.00	0.16 - 10.00	0.12 - 7.50	1549.00	175.00	1.250 x 2.360	30 x 60
SK 771.1	1.25 - 14.00	0.16 - 10.00	0.12 - 7.50	2479.00	280.00	1.625 x 3.150	40 x 80

* Can differ depending on the gear ratio

NORDBLOC.1[®]

SINGLE-STAGE GEAR UNITS



UNICASE housing

- Corrosion resistant, lightweight aluminum alloy
- Precision machined in one step
- Bearing and seal seats contained within the casting
- Precise alignment of shafts and gearing



High quality gearing

- Designed and manufactured up to AGMA class 13
- Gears hardened using NORD's state-of-the-art equipment
- High momentary overload capacity
- Case-hardened steel
- Minimum gear tooth hardness: 58 Rockwell C/720HV



Shaft data

- Material for input and output shaft: AISI 1045 or 4140
- Metric parallel key dimensions as per DIN 6885
- Imperial parallel key dimensions as per AISI B17
- Solid Shaft End Tap per DIN 332
- Customer and application specific shaft design solutions



Bearings

- Bearings in ABEC-1/PO quality
- Large output bearings
- High radial and axial loads possible
- Optional heavy duty output bearings available



Installation

- Non-positive and positive transmission of torques
- Reversible operation

Product options

Motors

- Motors: 0.16 – 10.0 HP
0.12 – 7.5 kW
- NEMA adapters: 56C – 210TC
- IEC adapters: IEC 63 – IEC 132
- Custom motor mounting solutions available

Lubricants

- Supplied as standard with ISO VG220 mineral oil
- Optional food grade or synthetic oil
- Supplied with drain plugs and optional oil sight glass

Shaft seals

- NBR shaft sealing rings
- Optional with FKM seals
- Double shaft sealing rings
- Option: prepared for long-term storage

Environmental protection

- High strength, corrosion resistant aluminum alloy housing is standard
- Paint coating solutions available for harsher environments
- Stainless steel shafts available
- Optional nsd tupH Sealed Surface Conversion System

Headquarters:

NORD Gear Corporation
800 NORD Drive
Waunakee, WI 53597
888-314-6673
info.us@nord.com, www.nord.com

Corona, CA
1180 Railroad Street
Corona, CA 92882
951-393-6565

Charlotte, NC
300 Forsyth Hall Dr.
Charlotte, NC 28273
980-215-7575

**NORD Gear Limited
Canada**
41 West Drive
Brampton, ON L6T4A1
800-668-4378
info.ca@nord.com

**NORD DRIVE SYSTEMS SA DE CV
Mexico**
Carr. Estatal 431. Km. 5.75 #6
Parque Industrial PYME
76971 Huimilpan QRO.
442 240 5371 5398
01 800 836 9192
info.mx@nord.com

Members of the NORD DRIVESYSTEMS Group



Global Vision, On-Site Support

NORD's extensive product range is readily available via a global network with branches in more than 60 countries. We offer the shortest delivery times and high quality support to our customers, are committed to exceeding our customers' wishes, and respond to ideas and specifications of every customer from all over the world.