

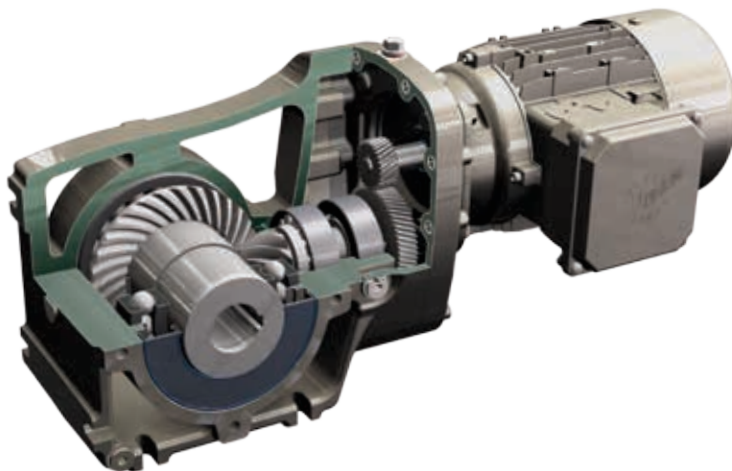
92.1/93.1 SERIES RIGHT ANGLE HELICAL-BEVEL 2-STAGE SPEED REDUCERS/GEAR MOTORS

PERFORMANCE SPECIFICATIONS

Torque Capacity : 407-5,841 lb-in
 Motor Power : 0.16-10 HP
 Ratio Range : 3.58:1 to 70:1
 Output Speed : 25-490 rpm
 Efficiency : Up to 97%
 Gear Stages : 2

Key Features

- UNICASE® main housing
- Quadrlip® output shaft sealing option.
- Large high-capacity output bearings
- High quality gearing (Up to AGMA Class 13)
- Large ratio per gear stage



Two Distinct Housing Styles

92.1 Series Housing Qualities

- Universal housing
- Feet & B14 face-flange (both sides)

93.1 Series Housing Qualities

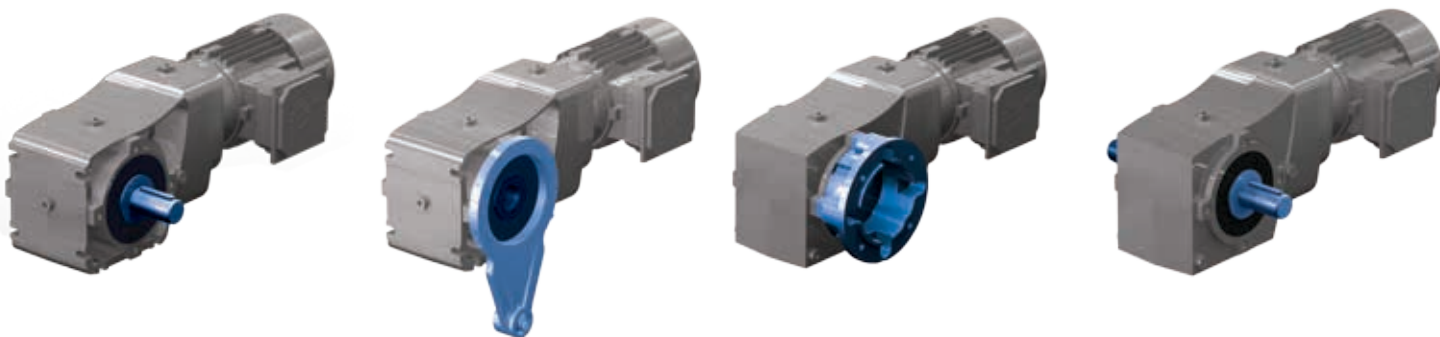
- Smooth bodied housing
- B14 face-flange / Optional tapped foot-holes
- Ideal for sanitary or washdown environments

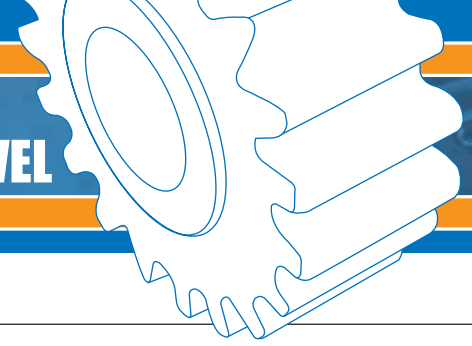
Modular Design / Flexible Options

- Integral garmotor, NEMA, IEC or solid shaft input
- B5 mounting flange (with through holes)
- Torque-arm for shaft mounting
- Foot-plate kit
- Solid output shaft - single-side or double-sided
- Hollow bore options: keyed, GRIPMAXX™ bushing system, or shrink disc

Unit Size	Torque Max* [lb-in]	Ratio Range Min-Max	Solid Shaft Ø		Keyed Hollow Shaft Ø					Shrink Disc Shaft Ø		GRIPMAXX™ Shaft Ø Range			
			[in]	[mm]	Std. [in]	Opt. [in]	Opt. [in]	Opt. [in]	Std. [mm]	[in]	[mm]	min [in]	max [mm]	min [in]	max [mm]
SK 9X072.1	407	3.58 - 61.88	0.750	20	0.750	0.500	-	-	25	1.000	25	0.500	1.000	20	25
SK 9X172.1	1,062	3.58 - 70.00	0.750	25	1.000	0.750	-	-	25	1.000	25	0.625	1.250	20	30
SK 9X372.1	1,938	3.72 - 55.49	1.000	30	1.1875	1.250	1.4375	1.500	30	1.1875	30	1.125	1.500	30	40
SK 9X672.1	3,222	4.36 - 48.56	1.250	35	1.375	1.4375	1.500	-	35	1.375	35	1.250	2.000	35	50
SK 9X772.1	5,841	4.17 - 66.96	1.375	40	1.500	1.4375	-	-	40	1.500	40	1.250	2.000	35	50

* Torque may vary by ratio





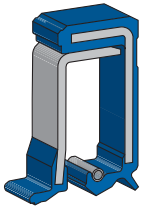
UNICASE™ HOUSING

- One-piece main housing
- Internally reinforced / high torsional stiffness
- Precision machined / single set-up
- Accurate bearing seats
- Precise alignment of shafts and gears
- Quiet smooth operation
- Lightweight / high-strength aluminum alloy
- Natural corrosion resistance
- Optimal heat dissipation



SHAFT DATA

- AISI 1045 standard / AISI 4140 optional
- Inch keys per ANSI B17
- Metric Keys per DIN 6885
- Standard end-tap on solid shaft
- Alternate materials upon request
- Hollow, Solid & Double Solid Shaft available
- Special shaft material options available
- Cross Drilled holes upon request



QUADRILIP™ OUTPUT SHAFT SEALS

- Four distinct protection barriers
 - Single-lip internal seal
 - Grease pack zone
 - Dual-lip outer seal
- Superior protection from contaminants
- Fewer leaks / longer seal life



LUBRICATION

- Factory filled / high quality gear oil
- Synthetic and food grade options
- Easy commissioning / eliminates dry-starts



GEARING

- High quality (up to AGMA class 13)
- Case-hardened steel
- Exceptional hardness: Rc 60 Typical
- 275 % momentary overload capacity



MOTOR OPTIONS

- Integral or Motorized C-face Reducers (NEMA or IEC designs)
- Meets global efficiency standards
- Inverter/vector duty rated
- Many options: brakes, thermal protection, encoders, space heaters, cooling fans, etc.



AUTOVENT™

- Spring-loaded pressure release (0.2-0.3 psi)
- Keeps out moisture and contaminants
- Provides extended lubrication life
- Longer-lasting seals, gears and bearings



SURFACE PROTECTION

- Optional protective paints and surface treatment packages.
- NSDTuph Sealed Surface Conversion System available with 93.1 units



BEARINGS

- High quality ABEC-1 roller bearings
- Oversized output bearings
- High radial load and axial load capabilities
- Long Service Life