

# HELICAL IN-LINE SPEED REDUCERS/GEAR MOTORS

## PERFORMANCE SPECIFICATIONS

Configuration: concentric  
 Integral motor HP (min/ max) : 0.16 / 200  
 Integral motor kW (min/ max) : 0.12 / 160  
 Typical efficiency : 97.5%  
 Number of gear reductions : 1 to 6

## MOUNTING STYLES

Footed housing style: standard  
 B5 flange outside diameter range [in] : 4.72 to 21.65  
 B5 flange outside diameter range [mm] : 120 to 550  
 B14 flange outside diameter range [in] : 3.54 to 7.87  
 B14 flange outside diameter range [mm] : 90 to 200

## OPTIONS

NEMA C-face or IEC input  
 Custom adapter flange  
 Flange pilot removed

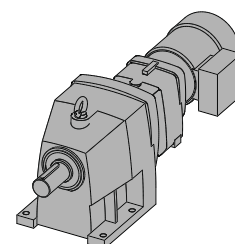
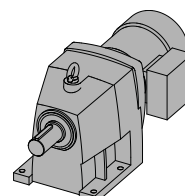
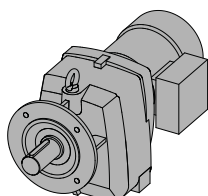
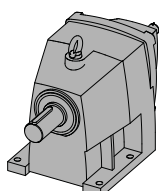
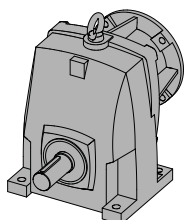
## RATIO AND SPEED

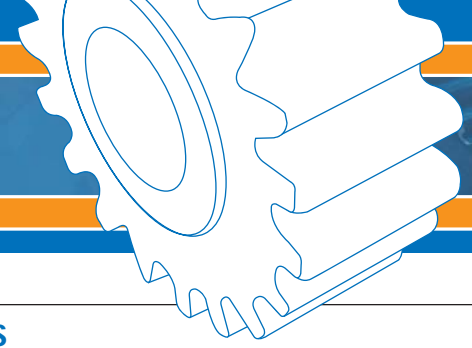
Minimum standard ratio : 1.24 : 1  
 Maximum standard ratio : 13304.45 : 1 (compound gear unit)  
 Minimum output speed from 1750 rpm motor : 0.13 rpm  
 Maximum output speed from 1750 rpm motor : 1411 rpm



Unit Size	Torque Max*		Ratio Range Min - Max	Shaft Diameter		Unit Size	Torque Max*		Ratio Range Min - Max	Shaft Diameter	
	[lb-in]	[Nm]		[in]	[mm]		[lb-in]	[Nm]		[in]	[mm]
SK 02	876	99	2.95 - 73.06	0.750	20	SK 51E	4,354	492	1.24 - 13.27	1.625	40
SK 03	974	110	65.50 - 313.11	0.750	20	SK 52	17,912	2,024	2.78 - 86.92	2.250	55
SK 11E	513	58	1.35 - 9.11	0.750	20	SK 53	19,744	2,231	58.94 - 728.20	2.250	55
SK 12	1,628	184	2.96 - 72.63	1.000	25	SK 62	27,612	3,120	2.97 - 48.73	2.500	65
SK 13	1,735	196	68.40 - 420.83	1.000	25	SK 63	32,745	3,700	17.37 - 372.21	2.500	65
SK 21E	681	77	1.46 - 10.20	1.000	25	SK 72	41,666	4,708	2.76 - 43.71	3.000	75
SK 22	3,310	374	2.79 - 86.30	1.250	30	SK 73	50,003	5,560	18.00 - 205.61	3.000	75
SK 23	3,009	340	64.80 - 516.65	1.250	30	SK 82	64,127	7,246	2.89 - 48.82	3.500	90
SK 31E	1,637	185	1.39 - 10.20	1.250	30	SK 83	81,243	9,180	21.04 - 216.61	3.500	90
SK 32	6,284	710	2.96 - 81.27	1.625	40	SK 92	93,925	10,612	3.51 - 35.47	4.250	110
SK 33N	5,947	672	88.18 - 740.37	1.625	40	SK 93	123,900	14,000	19.12 - 187.89	4.250	110
SK 41E	2,567	290	1.41 - 14.80	1.375	35	SK 102	153,698	17,367	4.28 - 38.81	5.250	130
SK 42	11,009	1,244	3.02 - 105.08	1.875	45	SK 103	204,966	23,160	21.19 - 207.47	5.250	130
SK 43	11,408	1,289	40.98 - 1071.82	1.875	45						

\* Torque may vary by ratio





### SHAFT DATA

- ANSI 1045 or 4140 Input and output shaft material
- Inch shaft key dimensions according to ANSI B17
- Metric shaft key dimensions according to DIN 747
- Standard output shaft drill and tap

### SHAFT DATA OPTIONS

Custom shaft diameters, Custom spline, Cross drilled holes, 304 stainless steel.



### MOTOR MOUNTING

- Integral motor : 1/6 to 250 HP
- C-face adapter frame size range : 56C to 360TC
- IEC adapter [B5] frame size range : IEC 63 to IEC 315
- Sugar scoop motor availability : 56 to 365T
- Top mount platform motor availability : 56 to 405T

### MOTOR MOUNTING OPTIONS

Custom motor adapter, Custom coupling diameter



### GEARING

- Up to AGMA Class 13 gear quality rating
- 58 Rockwell C minimum gear hardness
- Ground or skive hobbed Hard gear teeth finishing
- Standard drop forged gear blanks
- 275% momentary overload capacity
- Standard hunting tooth ratios



### HOUSING

- Class 35 gray iron housing material
- Single setup machining method
- UNICASE™ one piece housing design
- Seals directly contact main housing
- Exceptional housing torsional stiffness
- Thick housing wall section
- Castings are dip sealed



### BEARINGS

- ABEC-1 quality bearings
- Standard ball or tapered output bearings
- Tapered or spherical heavy-duty output bearings



### INTERNAL PARTS ASSEMBLY

- Heavy press fit assembly method
- Standard reversing duty
- Typical backlash range [arc minutes] : 10 to 17



### LUBRICANT & SEALING COMPONENTS

- Factory filled ISO 220 mineral oil
- Standard AUTOVENT™ breather style
- QUADRILIP™ output seal design
- 1 double lip & 1 single lip output shaft oil seals
- Nitrile rubber oil seals

### LUBRICANT & SEALING OPTIONS

Custom synthetic lubricating oil, Custom temperature lubricating oil, Fluid grease lubricant, Food grade lubricating oil, Long term storage preparation, Magnetic drain plug, Bullseye sight glass, Custom drain plug, Fluorinated rubber oil seal material, Custom oil seals



### ENVIRONMENTAL PROTECTION

- Exterior primer coverage on all metal exterior surfaces
- Water Based Resin paint type
- 316 stainless steel flake paint additive
- H1 USDA incidental contact exposure

### ENVIRONMENTAL OPTIONS

Severe duty and wash-down duty paint options, Custom paint, Shaft seal covers, High pressure washdown IP66 oil seals