

Additional Instructions Special Hand Release for BRE250 and BRE400 with Cap Screw and Pressure Plate ROBA-stop®-M Sizes 250 and 500

(E070 09 203 000 4 EN)



Please read these Additional Instructions carefully and follow them accordingly!

These Additional Instructions serve as a supplement to the brake Installation and Operational Instructions. Please also observe the Safety Regulations and Protective Measures in the Installation and Operational Instructions!

Ignoring these Instructions may lead to malfunctions or to brake failure, resulting in damage to other parts.

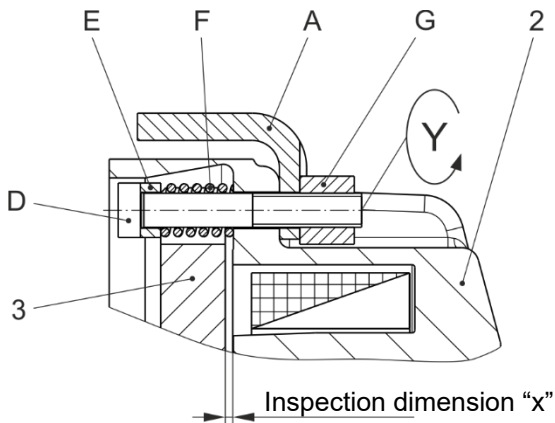


Fig. 1 (Size 250 / Type 891...0)

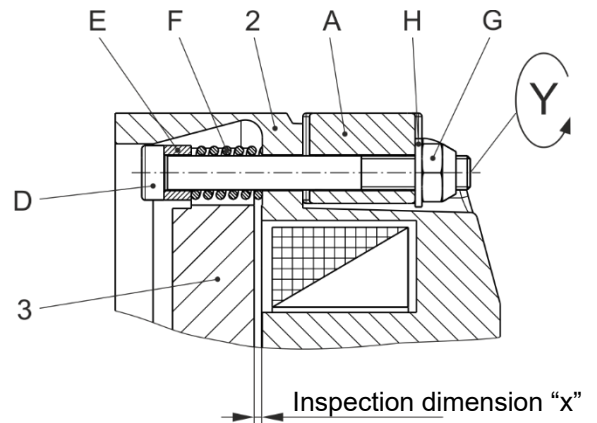


Fig. 2 (Size 500 / Type 891...0)

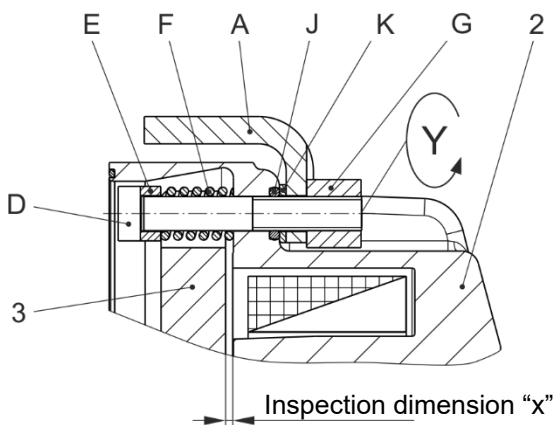


Fig. 3 (Size 250 / Type 891...1)

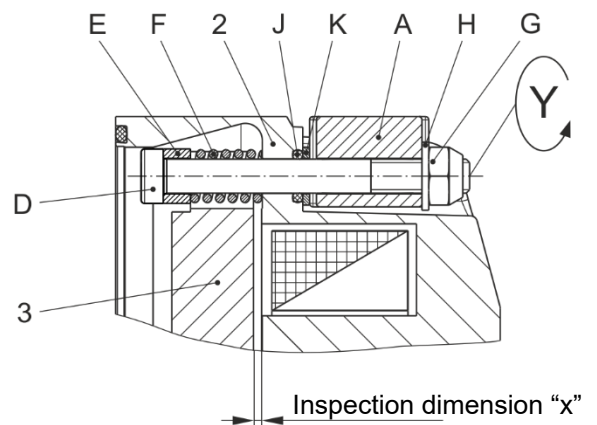


Fig. 4 (Size 500 / Type 891...1)

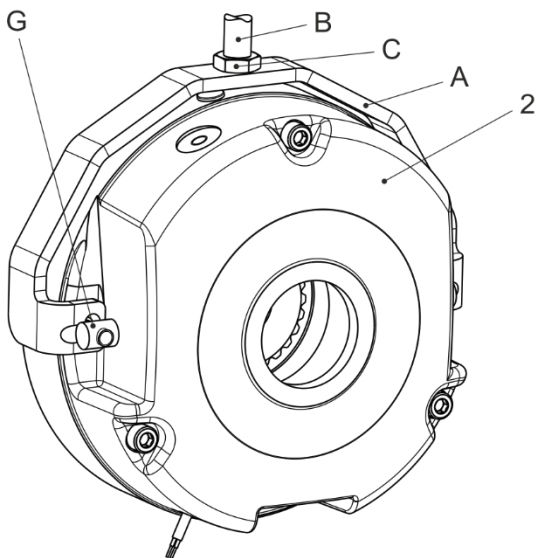


Fig. 5 (Size 250)

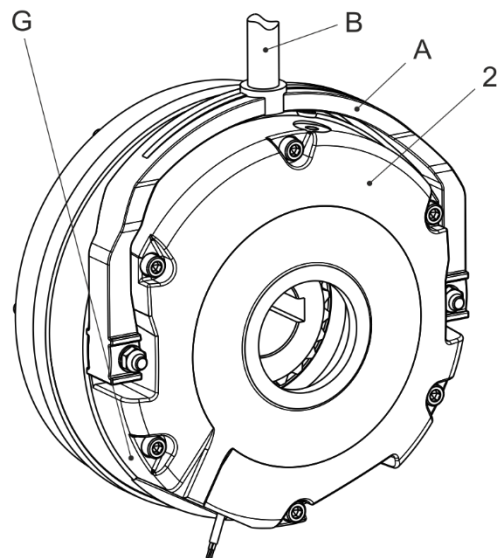


Fig. 6 (Size 500)

Additional Instructions Special Hand Release for BRE250 and BRE400 with Cap Screw and Pressure Plate

ROBA-stop®-M Sizes 250 and 500

(E070 09 203 000 4 EN)

Technische Daten

Mayr-Size	Nord-Size	Hand release force for Types 891.0_ _ _	Release angle	Inspection dimension "x" (Figs. 1 – 4)	Length "L" of the hand release (Fig. 7)	Number of turns "Y" of the hexagon nuts (Item G / (Figs. 1 – 4))
250	BRE250	330 N	10 °	2,4 ^{+0,1} mm	330 mm	1,5
500	BRE400	360 N	10 °	2,4 ^{+0,1} mm	357 mm	1,5

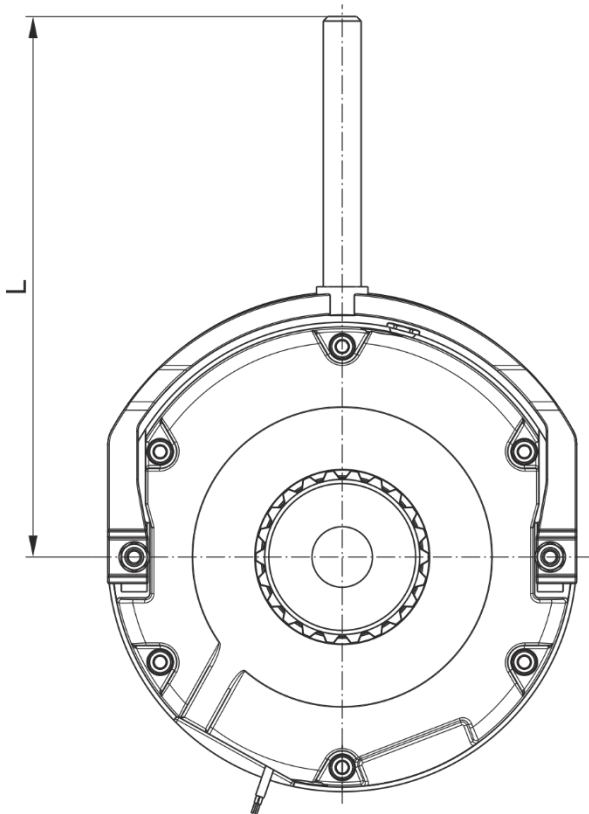


Fig. 7

Parts List (Only use mayr® original parts)

Item	Name
2	Coil carrier assembly
3	Armature disk
A	Switch bracket
B	Hand release rod
C	Hexagon nut (only on Size 250)
D	Cap screw
E	Pressure plate
F	Thrust spring
G	Cross-threaded bolts (on Size 250) Hexagon nut (on Size 500)
H	Washer (only on Size 500)
J	O-ring (only on Type 891. _ _ _ .1)
K	Intermediate plate (only on Type 891. _ _ _ .1)

DANGER



Please actuate the hand release carefully. Any existing loads are put into motion when the hand release is actuated.



The inspection dimension "x" (Figs. 1 to 4) is only used for hand release adjustment in dismantled condition.

Hand Release Installation (Figs. 1 to 6)



In order to install the hand release, the brake must be removed from the machine wall/flange plate and de-energized!

- Put the pressure plates (E) and then the thrust springs (F) onto the cap screws (D).
- Push the cap screws (D) with the pressure plates (E) and thrust springs (F) from the inside (you should be facing the armature disk (3)) into the hand release bores in the coil carrier (2).
- Only on hand release IP66, Type 891. _ _ _ .1 (Figs. 3 and 4):**
Push the O-rings (J) over the cap screws (D) and insert them into the coil carrier (2) recesses. Avoid crushing the O-rings (J).
- Only on hand release IP66, Type 891. _ _ _ .1 (Figs. 3 and 4):**
Push the intermediate plates (K) over the cap screws (D).
- Position the switch bracket (A) and place the cross-threaded bolts (G) for Size 250 or the washers (H) and self-locking hexagon nuts (G) for Size 500 on and screw them on lightly.
- Tighten both cap screws (D) until the armature disk (3) lies evenly against the coil carrier (2).
- Loosen both cap screws (D) by "Y" turns (see Table 1), thereby producing an air gap between the armature disk (3) and the coil carrier (2). This gives you inspection dimension "x".

CAUTION



An uneven adjustment dimension on the hand release or incorrect adjustment can cause the brake to malfunction or the braking function to be lost.

For Size 250, ensure that the two cross-threaded bolts (G) are positioned correctly in the grooves of the switch bracket (A).

- After installing the fan cover
 - For Size 250:**
Screw the hexagon nut (C) onto the hand release rod (B). Paint the hand release rod (B) thread M16 lightly with Loctite 243 (screw securement). Screw the hand release rod (B) into the switch bracket (A) and counter it with the hexagon nut.
 - For Size 500:**
Paint the hand release rod (B) thread M20 lightly with Loctite 243 (screw securement). Screw the hand release rod (B) into the switch bracket (A) and tighten it.