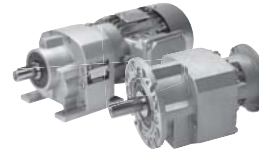


Mounting Positions



Mounting Positions

The reducer mounting position determines the approximate oil fill level and the appropriate vent location. In some cases mounting position may dictate possible variation in final reducer assembly. If considering any mounting positions that are not shown as catalog-standard options, it is critical that the customer consult with NORD prior to ordering.

New Mounting Position System

NORD is in the processes of incorporating a new mounting position systems. Historically the NORD mounting position system was based on international motor standards. NORD is changing in an effort to simplify the system. The new system is based on the six sides of a cube. Below is a cross reference between the old and new mounting position codes.

Mounting Position Cross Reference Table

Old	B3	B5	B5I	B5II	B5III	B6	B7	B8	V1	V3	V5	V6
New	M1	M1	M3	M5	M6	M5	M6	M3	M4	M2	M4	M2

Mounting Position Cross Reference Table

New	M1	M2	M3	M4	M5	M6
Old	B3, B5	V3, V6	B8, B5I	V1, V5	B5II, B6	B7, B5III

NORDBLOC®

