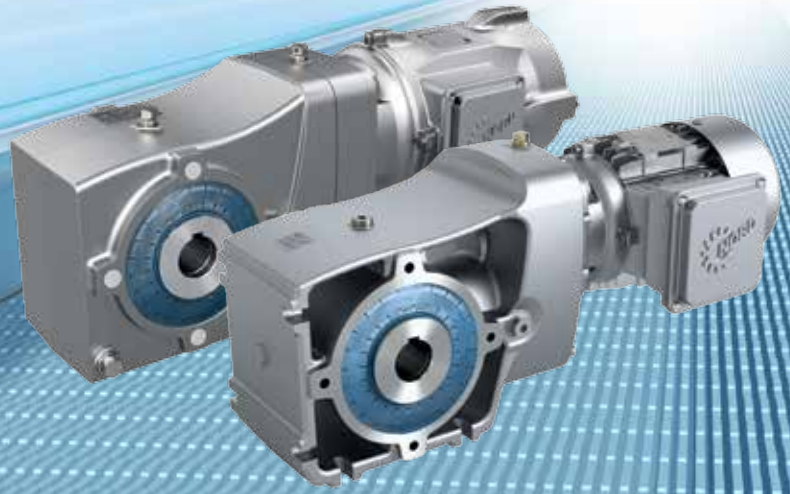


NORDBLOC.1[®]

HELICAL-BEVEL SERIES



Performance Specifications

Integral Motor kW: (min/max) 0.12 to 7.5
Integral Motor HP: (min/max) 0.16 to 10.0
Typical Efficiency: up to 97%
Number of Gear Reductions: 2

Mounting Styles

Footed housing style:

- Standard on 92.1 (through holes)
- Optional on 93.1 (tapped holes)

B5 flange outside diameter range: [mm] 120 - 200

B5 flange outside diameter range: [in] 4.72 - 7.87

B14 flange bolt circle diameter range: [mm] 80 - 150

B14 flange bolt circle diameter range: [in] 3.15 - 5.91

Ratio and Speed

Minimum standard ratio: 3.03:1

Maximum standard ratio: 70.00:1

Output speed (50Hz): 20.71 to 405.00

Output speed (60Hz): 25.00 to 490.00

Options

IEC, NEMA or solid shaft input

B5 flanges with through holes

Hollow shaft options:

- Shrink disc
- GRIPMAXX™

Solid output shaft (single or double sided)

Torque Arm

Type	Ratio Range	Input Power Range Max*		Torque Max*		Hollow Shaft		Solid Shaft	
		[kW]	[HP]	[Nm]	[lb-in]	[mm]	[in]	[mm]	[in]
NEW SK 9x0072.1	3.03 – 47.67	1.10	1.50	54	480	20	0.750	20x40	NEW 0.750
SK 9x072.1	3.58 – 61.88	1.10	1.50	80	710	20, 25	0.750	20x40 25x50	0.750
SK 9x172.1	3.58 – 70.00	1.50	2.00	120	1,060	20, 25, 30	1.000	20x40 25x50	0.750
SK 9x372.1	3.72 – 55.49	3.00	4.00	220	1,950	25, 30, 35	1.1875	25x50 30x60	1.000
SK 9x672.1	4.36 – 48.56	9.20	10.00	365	3,230	30, 35, 40	1.375	30x60 35x70	1.250
SK 9x772.1	4.17 – 66.96	9.20	10.00	655	5,800	40, 45, 55	1.500	35x70 40x80	1.375

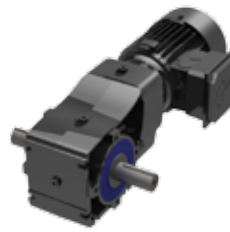
* May vary depending on ratio



92.1 Housing, B14 Flange,
Solid Shaft, Integral Motor



93.1 Housing, B5 Flange,
Hollow Shaft, Integral Motor



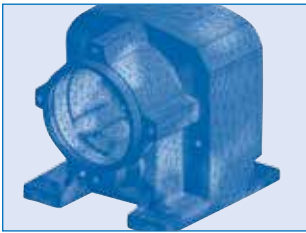
92.1 Housing, B14 Flange,
Double Solid Shaft, Integral Motor



93.1 Housing, B14 Flange, Torque Arm
Hollow Shaft, Integral Motor

NORDBLOC.1[®]

HELICAL-BEVEL SERIES



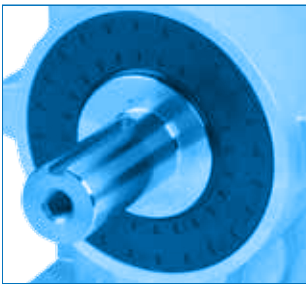
Housing

- BLOCK/UNICASE™ housing design
- Corrosion resistant aluminum alloy
- Precision Machined - Single setup
- Accurate bearing seats
- Precise alignment of shafts and gears



Gearing

- Up to AGMA Class 13 gear quality
- 275% momentary overload capacity
- High quality in-house gear hardening
- Case-hardened steel
- 58 Rockwell C/720 HV typical gear hardness



Shaft Data

- AISI 1045 or 4140 input & output shaft material
- Metric shaft key dimensions according to DIN 6885
- Inch shaft key dimensions according to AISI B17
- Standard output shaft drill & tap
- Optional custom shaft designs and materials



Bearings

- ABEC-1/P0 quality bearings
- Oversized output bearings
- High radial and axial load capabilities
- Optional heavy-duty output ball bearings



Internal Parts Assembly

- Positive and non-positive torque transmission
- Standard reversing duty

Product Options

Motor Mounting Options

- Integral motor: 0.12 - 7.5 kW
0.16 - 10.0 HP
- IEC adapter: IEC 63 - IEC 132
- NEMA C-Face adapter:
56C - 210TC
- Custom motor adapters &
coupling diameters

Lubricant Options

- Factory filled ISO 220 mineral oil
- Food grade & synthetic oil
fill options
- Drain plugs & inspection glass

Sealing Component Options

- Nitrile rubber oil seals
- Fluorinated rubber oil seals
optional
- Double lip output seal design
- Long term storage preparation

Environmental Protection Options

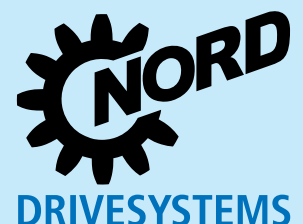
- Water based resin paints
- C1 to C5 paint options
- Severe/washdown paint options
- Shaft seal covers
- NSD tupH surface conversion

Headquarters:

Getriebebau NORD GmbH & Co. KG

Getriebebau-Nord-Straße 1
22941 Bargteheide, Germany
Fon +49 (0) 4532 / 289-0
info@nord.com, www.nord.com

Member of the NORD DRIVESYSTEMS Group



DS 1014 Mat.-Nr. 501480Z / 1516



Global Vision, Local Support

NORD makes its wide product range easily available through a global network that includes representation in over 60 countries. By providing all of our customers with prompt delivery, and expert support services, we are firmly committed to exceeding customer expectations and being responsive to the ideas and specifications of every customer, anywhere in the world.