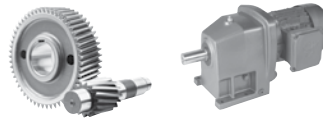


Helical In-line Ordering Guide



SK	Gear Unit			Shaft/Mounting	Reducer Options	-	Input/Motor	Motor Options
	1	2	3	4				

1 Gear Unit					
11E	02	03	12/02	63/22	63/23
21E	12	13	22/02	73/22	73/23
31E	22	23	32/12	73/32	83/33N
41E	32	33N	42/12	83/32	93/43
51E	42	43	52/12	83/42	103/53
	52	53		93/42	
	62	63		93/52	
	72	73		103/52	
	82	83			
	92	93			
	102	103			

2 Shaft/Mounting	
<input type="checkbox"/> Blank - Footed	<input type="checkbox"/> XZ - Foot/B14 Flange
<input type="checkbox"/> F - B5 Flange	<input type="checkbox"/> XF - Foot/B5 Flange

3 Reducer Options	
<input type="checkbox"/> VL - Heavy Duty Output Bearings	<input type="checkbox"/> OSG - Oil Sight Glass
<input type="checkbox"/> PR - Flange Pilot Removal	<input type="checkbox"/> OA - Oil Expansion Chamber
<input type="checkbox"/> FKM - Fluoro Rubber Seals	<input type="checkbox"/> OC - Oil Cooler
<input type="checkbox"/> SWV - Special Solid Shaft	<input type="checkbox"/> LL - Long Term Storage
<input type="checkbox"/> SM5 - Stainless Steel Output Shaft	<input type="checkbox"/> MDP - Magnetic Drain Plug
<input type="checkbox"/> Cross Drilled Shaft	<input type="checkbox"/> ADP - Additional Drain Plug

4 Input Shaft	NEMA Adapter	IEC	Integral Motors	Integral Premium Efficient Motors	Integral Intermittent Duty (60 min) Motors	Scoop	Motor Platform	Servo Adapter (Keyed)	
W	N56C	IEC 63	63S/4 - 0.16hp	80LP/4 - 1hp	225RP/4 - 40hp	80L/4 - 1hp	S56	MKN056	SEP 100
	N140TC	IEC 71	63L/4 - 0.25hp	90SP/4 - 1.5hp	225SP/4 - 50hp	90S/4 - 1.5hp	S140T	MKN140	SEP 130
	N180TC	IEC 80	71S/4 - 0.33hp	90LP/4 - 2hp	225MP/4 - 60hp	90L/4 - 2hp	S180T	MKN180	SEP 165
	N210TC	IEC 90	71L/4 - 0.50hp	100LP/4 - 3hp	250WP/4 - 75hp	100L/4 - 3hp	S210T	MKN210	SEP 215
	N250TC	IEC 100	80S/4 - 0.75hp	112MP/4 - 5hp	280SP/4 - 100hp	100LA/4 - 5hp	S250T	MKN250	SEP 300
	N280TC	IEC 112		132SP/4 - 7.5hp	280MP/4 - 125hp	112M/4 - 5.4hp	S280T	MKN280	Servo Adapter (Clamp)
	N320TC	IEC 132		132MP/4 - 10hp	315SP/4 - 150hp	132S/4 - 7.5hp	S320T	MKN320	
	N360TC	IEC 160		160MP/4 - 15hp	315MP/4 - 175hp	132M/4 - 10hp	S360T	MKN360	SEP 100
	N400TC	IEC 180		160LP/4 - 20hp	315RP/4 - 200hp	160M/4 - 15hp	S400T	MKN400	SEP 130
		IEC 200		180MP/4 - 25hp	315LP/4 - 250hp	160L/4 - 20hp			SEP 165
		IEC 225		180LP/4 - 30hp		180MX/4 - 25hp			SEP 215
		IEC 250				180LX/4 - 30hp			SEP 300
		IEC 280				200LX/4 - 40hp			
		IEC 315							

Other Speeds Available

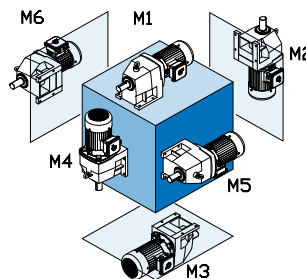
Product Specifications

Ratio :1

— OR —

Output Speed rpm

- Mounting Position
- M1
 - M2
 - M3
 - M4
 - M5
 - M6
 - Special _____



- Paint
- Standard Stainless Steel Paint
 - NSD+ (gray)
 - NSD+W (white)
 - NSD-X3 (gray)
 - NSD-X3W (white)
 - Casting Primed
 - Special _____

- Lubricant
- Standard
 - Synthetic
 - Food Grade
 - Other _____

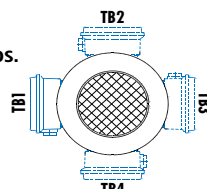
Shaft Diameter

B5 Flange Diameter (If required)

Gearmotor Only Details

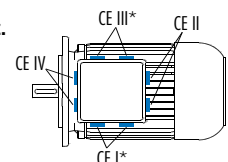
- Voltage & Frequency
- 230/460V-60Hz (460V only ≥ 40 hp)
 - 575V-60Hz
 - 208V-60Hz
 - 400V-50Hz
 - 115/230V-60Hz, 1 ph.
 - Other _____

- Terminal Box Pos.
- TB1
 - TB2
 - TB3
 - TB4



Mtg. Pos. M1 Shown

- Conduit Entry Loc.
- CE I *
 - CE II
 - CE III *
 - CE IV



* Brakemotor
Mtg. Pos. M1 Shown